

Design & Engineering

PCB

PCBA

Turnkey Box-Build

www.acmecircuit.com

About Acme Circuit...

Mr. Sneh Pandya is the visionary co-founder of Acme Circuit, an entrepreneur known for his bold outlook and his ability to embrace challenges. His journey from PCB design to advanced PCBA and complete box building solutions reflects his relentless drive for growth and innovation.

Under his leadership, Acme Circuit has established a world-class manufacturing facility producing UL-certified PCBs, setting benchmarks in quality and reliability. With a strong focus on global competitiveness, Mr Pandya has successfully developed export markets and built enduring relationships with international clientele, positioning Acme Circuit as a trusted partner across industries.

His entrepreneurial spirit, combined with technical expertise and strategic foresight, has transformed Acme Circuit into a brand synonymous with connectivity, precision, and excellence. By continuously expanding capabilities and nurturing global partnerships, Mr. Pandya ensures Acme Circuit remains at the forefront of electronics manufacturing.

From humble beginnings to international recognition, his story is one of vision, resilience, and leadership – an inspiration for those who believe in turning challenges into opportunities.



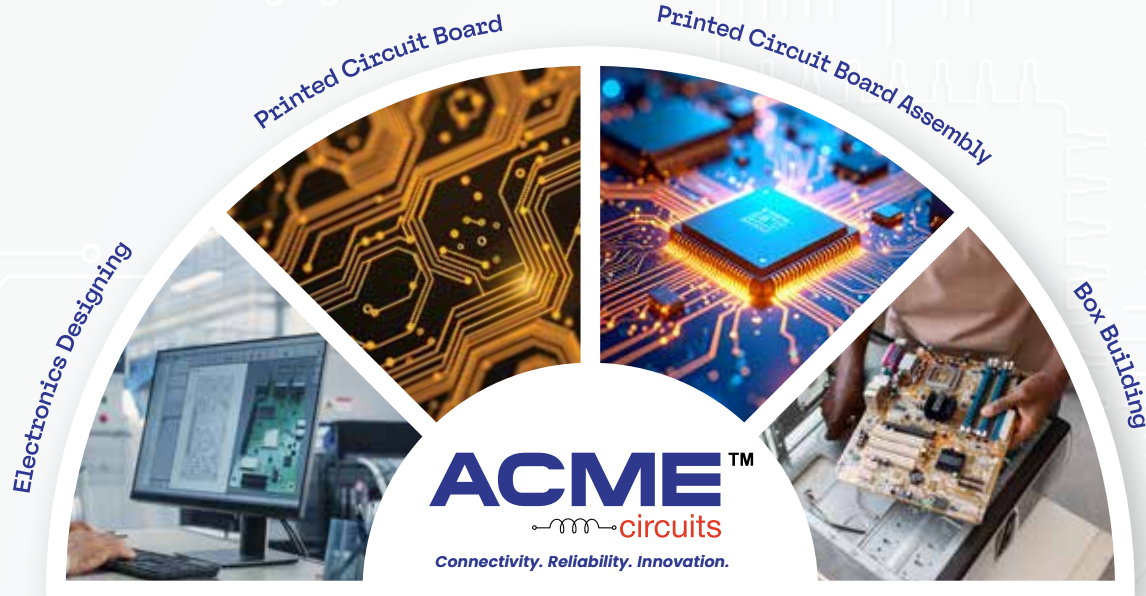
Sneh Pandya

Co-Founder

Quick Index

Strength of Acme Circuit	04
End-To-End Electronic Manufacturing	06
Quality Systems / Certification / Membership	07
Design Engineering	08 - 09
PCB	10 - 17
PCBA	18 - 23
Cable Assembly and Wire Harness	24 - 25
Turnkey Box Build	26 - 27
Plastic & Metal Enclosure	28
Manufacturing Facility & Mould Development	29
Industries we serve / Components BOM Sourcing	30
Esteemed Customers	31

Strength of Acme Circuit



Acme Circuits has a team of highly experienced passionate technocrats.

Acme Circuits has total facilities & capabilities of Designing, Engineering & Electronics Contract Manufacturing Services (ECMS)

State-of-the-art manufacturing facilities.

Uses technologically advanced equipment from the world's leading brands.

Acme Circuits believes in creating values by providing innovative and unparalleled services and solutions in the field of Electronic Manufacturing, Design & Engineering and Box Building

Rapid Prototyping, New Product Introduction and Supply Chain Management.



Design & Engineering

Acme Circuit offers comprehensive electronic product design engineering, transforming concepts into market-ready solutions. Our team integrates hardware, firmware, and mechanical design expertise to deliver optimized, reliable, and scalable products. From schematic development and PCB layout to prototyping and validation, we ensure compliance with global standards. Our design philosophy emphasizes innovation, manufacturability, and cost efficiency.



PCB

Since 2005, our company has been a leading manufacturer, supplier and exporter of a specialized, high-precision, high-reliability, high-density PCBs (Printed Circuit Boards). We are an ISO 9001:2015 certified company working with a commitment to adhere to the international standards in the designing and manufacturing of PCBs. We are a one-stop solution for all your requirements, from PCB layout to fabrication.



PCBA

Acme is a team of young passionate technocrats. Design, Engineering & Electronics Contract Manufacturing Services (ECMS) company having state-of-the-art manufacturing facility and technologically advanced equipments from world's leading brands. Acme believes in creating values by providing innovative and unparalleled services and solutions in the field of Electronic Manufacturing, Design & Engineering, Rapid Prototyping, New Product Introduction and Supply Chain Management.

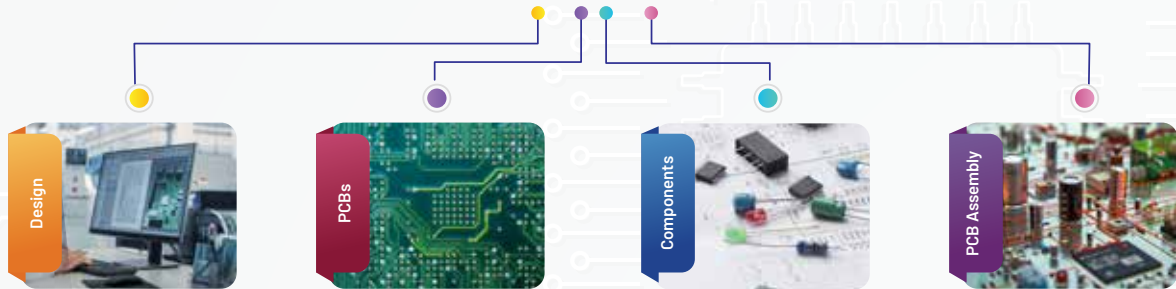


Turnkey Box-Build, Plastic & Metal Parts

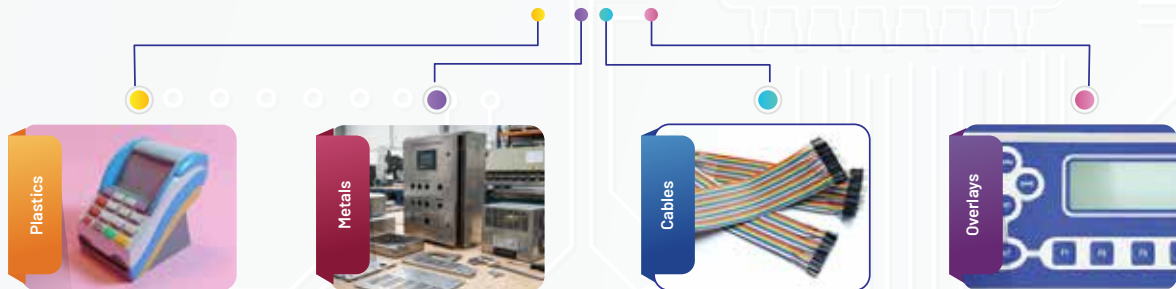
The group provides one stop solution for custom injection molded parts with expertise in mold development, injection molding process and post mold assembly operations. We specialize in providing engineering grade plastic parts to OEMs and end use product companies.

End-To-End Electronic Manufacturing

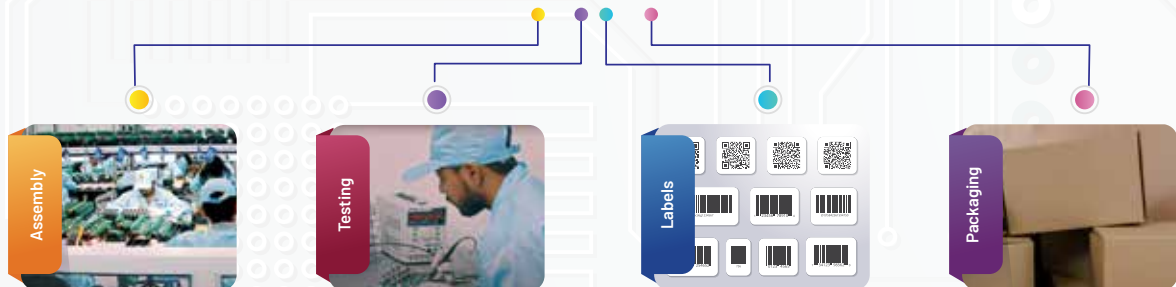
PCB / PCBA



Allied Parts



Turnkey Box Building



Quality Systems / Certification / Membership



FEDERATION OF INDIAN EXPORT ORGANISATIONS

Set up by Ministry of Commerce, Government of India
ISO 9001:2015 Certified

Green Manufacturing & Intellectual Property Protection



Design Engineering

Acme's End-to-End Electronics Design Solutions



Acme's End-to-End Electronics Design Solutions

- Concept to Product:** Transforming ideas into market-ready electronic solutions through end to end design services.
- Hardware Expertise:** Schematic dev., PCB layout, & component selection optimized for performance and reliability.
- Firmware & Software Integration:** Embedded systems design ensuring seamless functionality and scalability.
- Mechanical Design:** Enclosures and product ergonomics aligned with manufacturability and user experience.
- Prototyping & Validation:** Rapid prototyping, functional testing, and compliance verification against global standards.
- Simulation & Analysis:** Advanced tools for thermal, signal integrity, and reliability modeling to minimize risk.
- Cross-disciplinary collaboration:** Coordinated engineering across electronics, mechanical, and software domains.
- Compliance & Certification:** Adherence to international safety, EMC, and regulatory requirements.
- Innovation Focus:** Designs tailored for cost efficiency, manufacturability, and future proof technology adoption.
- OEM/ODM Partnership:** Trusted support for clients seeking competitive, scalable, and sustainable electronic products.
- RFQ Management:** Fast track handling of pilot production requests with precision and speed.
- Custom Test Systems:** Development of tailored testing solutions to ensure product reliability.
- Strategic Cost Optimization:** Reduction through alternate vendor sourcing and supply chain innovation.
- Product Transformation:** Complete revamping with the introduction of cutting edge technologies.

Few of Our Designed Products:

Actuator Valve Keypad

Robot Badges

Single Phase Actuator Valve Power Card

Three Phase Actuator Valve Power Card

5V, 2A SMPS power supply

RF Remote Based Police Card Locker

Vacuum Cleaner Circuit

PCB

Manufacturing Capacity

We offer prototypes and high-volume production in our Vadodara Gujarat facilities. Manufacturing includes single-sided, Metal core and multi-layer constructions using an array of base materials. Upon request, our global partners are an option based on lead times and pricing requirements.

Our 60,000 sq. ft., full-service PCB solution-provider at our headquarters in Ahmedabad is capable of manufacturing over 180, 000 sq. mtr. of panels per annum. Within this facility, our manufacturing processes are continuously upgraded with new equipment to allow us to stay current with the newest technologies.

PCB Capabilities



Production Capabilities (Rigid, Flex and Rigid-Flex)

FR4, CEM1, CEM3, High Tg material, PTFE, Metal Cladded & Multi Layers upto 40

Layers: 1-40

Smallest Trace/Space:

3/3 mils Smallest Pad Size: 3 mils

Min. Aspect Ratio: 12:1

Board Thickness: 20-250 mils

Minimum 0.4 mm BGA Pitch

LOI Solder Mask Registration

Plated Edges / Castellations

Multiple Plating

Minimum Solder Mask Between Pads: 2.5 mils

Min. Core Thickness: 2mils (without copper), 5 mils (with copper)

Smallest Drill Size: 3 mils (Mechanical), 3 mils (Laser)

Smallest Finished Hole Size: 2 mils (Mechanical), 2 mils (Laser)

Vias: Blind, Buried, In Pad, Via fill

Largest Panel Size:

22" x 48" (Single-sided & MetalCore PCBs)

22" x 26" (Double-sided PCBs)

22" x 26" (Multi-Layer PCBs)

Materials:

FR-4 (Low Tg, or High Tg, UL Approved)

Megtron 6

Polyamide

Rogers Ceramic & Duroid

Halogen-free

Taconic Nelco

Impedance Tolerance : 5%

Impedance Control

LOI Inner/Outer Layer Imaging

High Copper Weight

Via Fill Conductive / Non-Conductive

Control Depth Routing

Metal Core:

Aluminium Core 6061

Aluminium Core 5052

Copper Core

Copper-Invar-Copper

Surface Treatments:

HASL (lead or lead-free)

ENIG

Gold Plating

Immersion Tin

Immersion Silver

OSP

Solder Mask

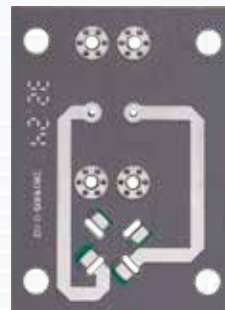
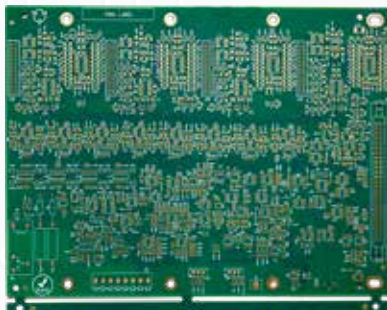
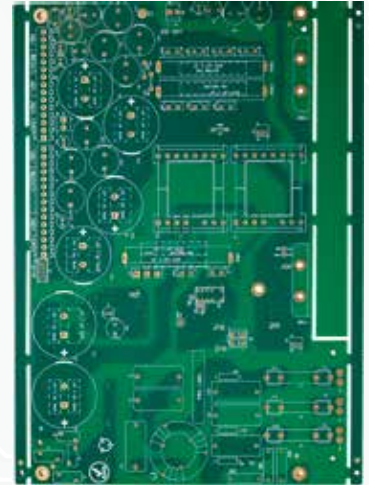
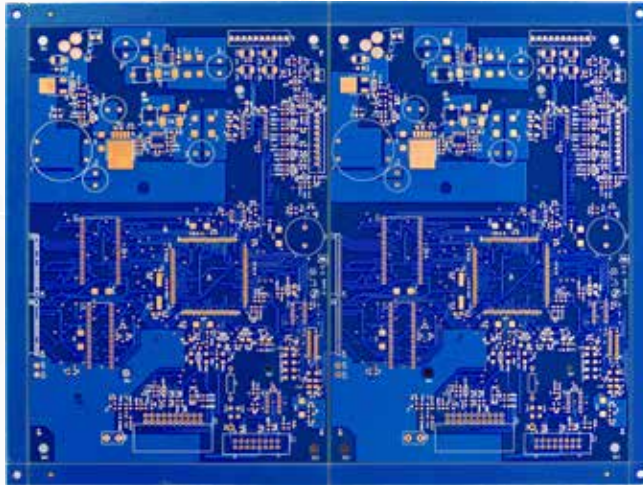
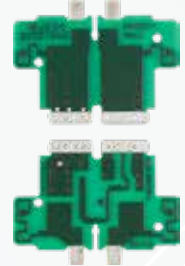
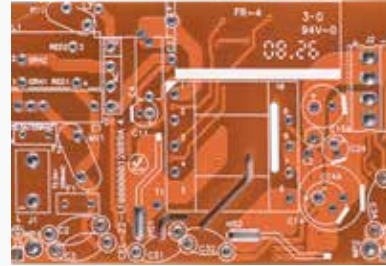
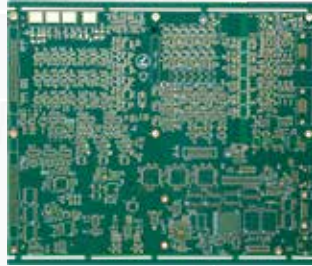
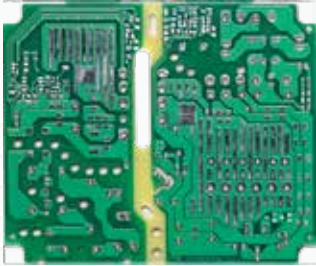
Green, White, Orange, Blue Red, Black,

Yellow, Customer Colors

Material That We Use



PCB Products

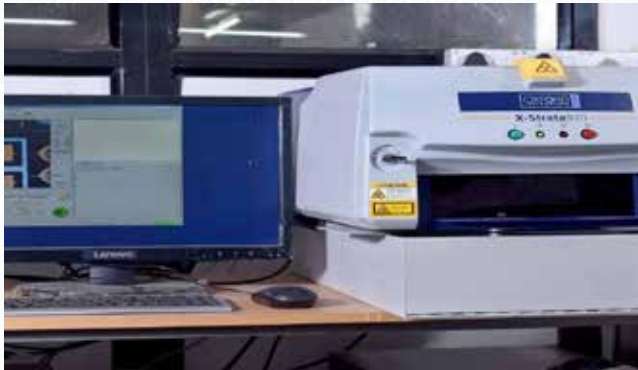


In-Process Quality Assurance Instruments

Quality Assurance Instruments	Make Mode
Controlled Impedance Calculator & Measurement System	Polar-CITS880
Hole Checker Machine	Asida-JK5200
Surface Copper thickness comparator	Elcometer152
Spindle Run-out measurement	OPTECH -RI
PTH & Surface copper thickness measurement	CMI-MR4000
Portable PTH Copper Tester	CMI-PTX
UV Integrating Radiometer	EIT -UYIRAD
Micro-section tester with 5-1000 x magnification	Rayshine HongKong
Film Inspection Machine	CECO-CYCLOPSIII
Quick Check Hole Gauge	DATCON
V-Scoring Depth Gauge	USSR
Analytical Balance, Accuracy 0.01mg	Dhona - 100DS
Copper Testing Meter	HANNA - HI93702
Automatic Optical Image	Camtek Dragon AOI 3G
Automatic Optical Inspection	Orbotech Discovery 8800
2D Measuring Instrument	Rayshine Hong Kong
Peel Strength Tester	Rayshine Hong Kong
Solderability Tester	Rayshine Hong Kong
Cleanroom Particles Counter	Rayshine Hong Kong
PIM ANALYSER	Rosenberger
1000X-Microscope	Rayshine Hong Kong

Process Control Instruments

Process Equipments	Make	QTY	Installation Date
Auto Hole Checker Machine	Ashida	1	March 2018
Pth Thickness Measuring Instruments	Oxford Instruments	2	July 2017
50 X Microscope	Peak Microscope	2	July 2017
Impedance Measuring Instruments	PolarInstruments	1	November 2017
Solder mask Thickness Measuring Instrument	Nanjing Sunny & Oxford Instruments	2	July 2017
Xrf X-Strata920	Oxford Instruments	1	July 2017
Surface & Pth Copper Measuring Instrument	Oxford Instruments	1	July 2017



We manufacture in compliance with **IPC-600** and upto **IPC-6012F** standards, producing **Class 2 boards & Class 3 boards** as well.

Our Infrastructure - PCB



Our Infrastructure - PCB



PCBA

We provide contract manufacturing with high-speed SMT and through-hole lines for both prototypes and large production orders across military, medical, automotive, industrial, and consumer sectors. Our in-house design and fabrication allow for prototype creation in as fast as 24 hours. We also offer functional testing, programming,

inspection, and rework.

Our quality system ensures that employees are IPC-A-610 and IPC-J-STD Class III qualified, and all SMT areas are ITAR-restricted to meet military standards. Additionally, we are ESD compliant with ANSI/ESD S20.20.



State-Of-The-Art Facility

Located in the heart of Industrial Corridor Area
ESD Floors & Human ESD Control
Centrally Air Conditioned Dust Free Environment

Easy access to Airport, Seaport and Road Transportation
across India
200+ Skilled Engineers and Technicians

3 Advanced SMT Lines

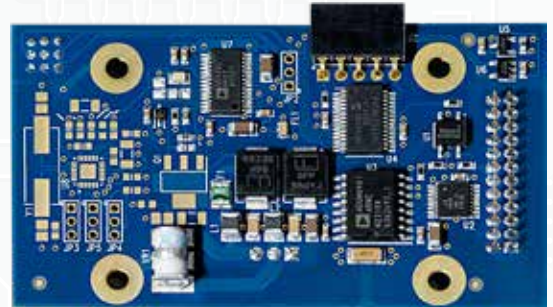
Panasonic: NPM D3A
Fuji GPX CII: Paste Printer
GKG G-TITAN: Paste Printer
KOH YOUNG KY8080: 3D SPI
FUJI AIMEX 3C: P & P
JT RS800: Reflow Oven
KIC PROFILER
NORDSON: 3D AOI
TRI: 2D AOI
GLENBROOKE: X-Ray

Capabilities & Capacity

SMT > 01005 to 102mm SMT Components Size
SMT > Micro BGA/Large BGA, CSP, Flip-Chip, Fine Pitch, QFN & Modules/SOM
PCB Size: 510mmx 400mm
Flex & Rigid-Flex PCB Assembly
Thru-Hole Assembly
No MOQ, Proto, High-Mix Low Volume or High Volume
IC Programming, Board Programming & Board Level/System Level Testing
Conformal Coating
Epoxy Potting
Cable/Wire/Flex Cable Soldering on the Board
5000-10000 PCBA per Day
500-3000 Products/Box-Build per Day
200,000 CPH Capacity of SMT Line



PCBA Products



Our Infrastructure - PCBA



Conformal Coating Robots



In Circuit Tester



Component Counter

Our Infrastructure - PDBA



Supporting Equipments and Jigs & Fixtures



AOI Machine



Aqua Wash-line Machine



Wave Soldering Machine



Epoxy Potting Machine



Laser Marking Machine



PCB Separation Machine

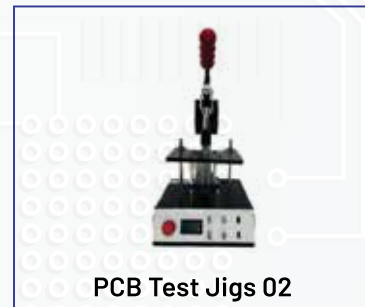
Customise Testing Jigs & Fixtures



PCB Test Jigs 01



Vacuum Test Fixtures



PCB Test Jigs 02

Cable Assembly & Wire Harness

Cable Assembly & Wire Harness

Fully Automatic Wire
Stripping & Cutting Machines
Precision Crimping Machines
Sleeve Cutting Machines
Refers to IPC/WHMA A 620



**Precision Crimping
Machines**



**Sleeve Cutting
Machines**



**Automatic Wire Stripping
& Cutting Machines**

Capacities & Capabilities

100% continuity and insulation resistance testing (Megger Testing)

Visual, mechanical, and pull force verification

Soldered, crimped, and molded connector terminations

Supports multiple wire gauges and connector configurations

Flexible production for low to high volumes

We have Two cable assembly lines

1500 2000 Cable Assembly Per day



We Support All Types of Cables

Tri Rated Cable Assembly

LED Module Cable Assembly

Different Types of Micro Controller

Switch Cable Assembly

Multi Core Wire Cable Assembly



Turnkey Box-Build

5 Advanced Box-Build / Top Level Assembly Lines
Experienced and Skilled Assembly Workforce
Assembly lines equipped with PCs, Scanners, Printers & Marking Machines
Equipped with IP Cameras to monitor production process remotely by customer.

Assembly Line Equipment



Printers and Scanners



Laser Marking
Systems



Ultrasonic
Plastic Welding
Machine

Box Built Products



Overlays and Packaging

Partners with keypad overlay manufacturers and packaging designers & manufacturers



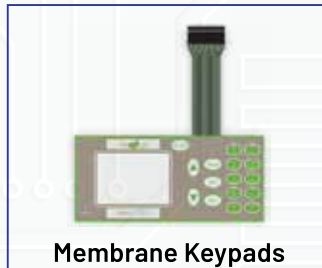
Overlay PC Labels



Membrane Keypads



Overlay PC Labels



Membrane Keypads



Product Packaging

Plastic Enclosures

Plastic Injection Molds/ Tools

BOX-BUILD/ TLA

25 Injection Molding Machines from 25 Tons to 650 Tons

from leading brands like Feromatik Milacron, Engel, L&T and

Arbourg with Automatic Robot pick up

Can Process all kind of Engineering Plastics

Pad Printing on Plastic Parts

Plastic Parts sub-assemblies

Over-Molding & Insert Molding



Metal Enclosures

Partners with fabricators and extruders locally

Enclosure & Plates> Sheet Metal Fabrication

Blanked and Turned Parts

Aluminium Extrusion

Pressure Die-Casting and Gravity Casting

Hi-Tech Laser cutting and Bending machines

Tools & Dies for Metal Cutting

Powder Coating

Anodizing Process



Manufacturing Facilities



60-1050 Clamp Tonnage

31 Injection Molding Machines



ISO 8 Class 100,000 Clean Room

Mould Development

Acme has partnered with mould manufacturers in India, China & Taiwan.

Acme Engineering team reviews and controls aspects of mould DFM, mould Flow Analysis & mould Design.

Experts in critical moulds such as hot runners, split moulds with hydraulic and pneumatic core pulls.

Mould Trial and Qualification process

In-house tool room for mould repair/ modification and preventive maintenance.



Moulding Machinery

From 55 Ton to 1050 Ton machines are available.

YIZUMI, Milacron, ARBURG, L&T and TKC

Industries we serve



Renewable Energy



Automobile



Industrial Electronic



Telecommunication



Railways



IoT / IT



Medical

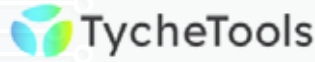


Consumer Electronics

Components Sourcing



Esteemed Customers





Thank You



Contact us



Acme Circuit - HO

11/13, Subhash Industrial Estate, Nr. Swaminarayan Mandir,
CTM Ramol Road, Ahmedabad - 380 026, Gujarat (India)



+91 98980 11524

+91 99747 46869

+91 98200 87795



ceo@acmecircuit.com

info@acmecircuit.com

cbd@acmecircuit.com



Sales Office - Mumbai



+91-9987588200



global@acmecircuit.com



WhatsApp



Digital Catalogue